

**Table 1. Changing Caseloads in Five Urban Maryland Jurisdictions, August 1998 to March 2001**

Jurisdiction	Caseload Aug-98	Caseload Mar-01	Percentage Change	Share of the State's Total Caseload Change
Baltimore City	56,648	43,764	-22.7%	40.2%
Prince George's County	14,524	7,078	-51.3%	23.2%
Baltimore County	13,308	10,032	-24.6%	10.2%
Montgomery County	7,342	6,508	-11.4%	2.6%
Anne Arundel County	6,011	3,790	-36.9%	6.9%
All other counties	32,419	27,014	-16.7%	16.9%
State total	130,252	98,186	-24.6%	100.0%

Source: The Maryland Department of Human Resources, Client Automated Resources and Eligibility System (CARES).

**Table 2: How Entry and Exit Dynamics Contributed to Caseload Change in Maryland**

Month	Maryland			Baltimore City			Prince George's County		
	Caseload	Entrants	Exiters	Caseload	Entrants	Exiters	Caseload	Entrants	Exiters
Aug-98	130,252	6,847	7,983	56,648	3,032	3,225	14,524	753	913
Sep-98	128,769	6,500	7,906	56,006	2,583	3,323	14,427	816	1,010
Oct-98	127,903	7,040	7,857	55,388	2,705	3,241	14,258	841	1,050
Nov-98	126,499	6,453	7,336	54,549	2,402	3,026	13,878	670	1,052
Dec-98	125,308	6,145	8,407	53,986	2,463	3,524	13,499	673	1,097
Jan-99	123,202	6,301	7,708	52,917	2,455	3,271	13,124	722	975
Feb-99	121,451	5,957	7,934	52,134	2,488	3,311	12,743	594	990
Mar-99	119,534	6,017	8,242	51,493	2,670	3,404	12,245	492	1,057
Apr-99	117,317	6,025	8,170	50,662	2,573	3,353	11,774	586	1,076
May-99	114,617	5,470	7,436	49,722	2,413	3,006	11,143	445	903
Jun-99	112,503	5,322	7,848	49,132	2,416	3,159	10,559	319	996
Jul-99	110,498	5,843	7,581	48,395	2,422	3,072	9,982	419	922
Aug-99	109,046	6,129	7,648	47,986	2,663	3,180	9,525	465	913
Sep-99	107,391	5,993	7,019	47,331	2,525	3,111	9,064	452	713
Oct-99	106,859	6,487	6,863	46,875	2,655	2,997	8,906	555	649
Nov-99	106,137	6,141	6,275	46,499	2,621	2,635	8,741	484	622
Dec-99	105,526	5,664	7,513	46,272	2,408	3,319	8,544	425	692
Jan-00	103,650	5,637	6,665	45,248	2,295	2,796	8,291	439	593
Feb-00	102,836	5,851	6,276	44,906	2,454	2,720	8,199	501	501
Mar-00	102,862	6,302	6,558	45,017	2,831	2,614	8,208	510	595
Apr-00	101,906	5,602	6,345	44,977	2,574	2,558	8,071	458	563
May-00	101,010	5,449	6,047	44,980	2,561	2,355	7,911	403	524
Jun-00	100,694	5,731	6,325	45,137	2,512	2,524	7,837	450	529
Jul-00	100,333	5,964	5,962	45,186	2,573	2,503	7,830	522	537
Aug-00	100,658	6,287	6,695	45,349	2,666	2,881	7,906	613	635
Sep-00	100,281	6,318	6,429	45,173	2,705	2,742	7,798	527	613
Oct-00	99,815	5,963	6,384	44,873	2,442	2,679	7,632	447	607
Nov-00	99,145	5,714	5,820	44,625	2,431	2,374	7,436	411	562
Dec-00	99,166	5,841	6,587	44,692	2,441	2,841	7,314	440	726
Jan-01	98,652	6,073	6,375	44,189	2,338	2,651	7,102	514	563
Feb-01	97,625	5,348	5,849	43,660	2,122	2,531	7,016	477	532
Mar-01	98,186	6,410	7,460	43,764	2,635	3,083	7,078	594	623
Apr-01	98,266	7,540		43,459	2,778		7,120	665	

Source: The Maryland Department of Human Resources, Client Automated Resource and Eligibility System (CARES).

**Table 3: Cumulative Exit Rate, for Cohorts that Entered in August 1998 and August 1999**

Months After Entering	Maryland		Baltimore City		Prince George's County	
	1998 Cohort	1999 Cohort	1998 Cohort	1999 Cohort	1998 Cohort	1999 Cohort
	<i>(percent)</i>					
1	11	13	11	14	7	8
2	16	19	15	19	12	16
3	23	27	20	26	22	24
4	32	39	29	36	34	39
5	40	46	37	43	43	44
6	45	49	42	46	48	47
7	50	52	47	49	53	49
8	54	58	50	54	59	57
9	57	60	54	57	62	59
10	60	62	56	59	65	62
11	65	66	60	63	71	66
12	69	71	66	69	74	70
13	71	73	68	71	76	72
14	73	74	69	72	78	72
15	75	75	71	73	79	74
16	76	77	72	76	81	77
17	78	78	74	77	82	79
18	79	79	75	78	83	80
19	79	80	76	79	84	82
20	80	81	77	80	85	82
21	81		77		86	
22	82		78		87	
23	83		80		88	
24	84		81		88	
25	85		82		89	
26	85		82		90	
27	86		83		90	
28	87		83		91	
29	87		84		91	
30	87		84		92	
31	88		85		92	
32	88		85		92	
Size of Entering Cohort	6,847	6,129	3,032	2,663	753	465

Source: The Maryland Department of Human Resources, Client Automated Resource and Eligibility System (CARES).

**Table 4: Simulations of Hypothetical Caseload Trajectories**

Description	Simulation 1			Simulation 2		
	Caseload	Entrants	Exits	Caseload	Entrants	Exits
<b>Description</b>	Assumes: 1) number of entrants remains constant at August 1998 level, and 2) exit rate profile remains constant at levels actually observed for August 1998 cohort.			Assumes: 1) number of entrants remains constant at August 1998 level, and 2) exit rate profile remains constant at levels actually observed for August 1999 cohort.		
<b>Month 1, Aug 1998</b>	130,252	6,847	9,108	130,252	6,847	9,557
<b>Month 12</b>	113,952	6,847	7,625	111,741	6,847	7,844
<b>Month 24</b>	107,256	6,847	7,230	104,056	6,847	7,289
<b>Steady State</b>	97,550	6,847	6,821	92,987	6,847	6,823

**Table 5: Summary of Food Stamp Program Exits from First Spell, by Selected Variables, for a Cohort of New Entrants in August 1998**

Selected Variables	Median Spell Length	Entering Cohort Size	Cumulative Exit from First Spell				
			Month 3	Month 6	Month 12	Month 24	Month 32
State	8	6,847	1,591 23.2%	3,103 45.3%	4,744 69.3%	5,766 84.2%	6,045 88.3%
Baltimore City	8	3,032	617 20.3%	1,276 42.1%	1,995 65.8%	2,449 80.8%	2,585 85.3%
Other Metro	7	2,669	689 25.8%	1,290 48.3%	1,940 72.7%	2,337 87.6%	2,431 91.1%
Non-Metro	7	1,146	285 24.9%	537 46.9%	809 70.6%	980 85.5%	1,029 89.8%
Female-Headed	8	4,852	1,000 20.6%	2,060 42.5%	3,213 66.2%	4,009 82.6%	4,236 87.3%
Male-Headed	6	1,990	591 29.7%	1,040 52.3%	1,526 76.7%	1,752 88.0%	1,804 90.7%
Black, Non-Hispanic	8	4,171	935 22.4%	1,878 45.0%	2,865 68.7%	3,488 83.6%	3,676 88.1%
White, Non-Hispanic	8	2,101	512 24.4%	946 45.0%	1,453 69.2%	1,766 84.1%	1,848 88.0%
Hispanic	8	127	32 25.2%	55 43.3%	85 66.9%	119 93.7%	119 93.7%
Other	7	448	112 25.0%	224 50.0%	341 76.1%	393 87.7%	402 89.7%
Household Size:							
1	7	3,125	853 27.3%	1,510 48.3%	2,278 72.9%	2,656 85.0%	2,765 88.5%
2	8	1,579	329 20.8%	697 44.1%	1,076 68.1%	1,340 84.9%	1,403 88.9%
3	8	1,080	216 20.0%	460 42.6%	711 65.8%	898 83.1%	948 87.8%
4	8	645	113 17.5%	279 43.3%	432 67.0%	549 85.1%	577 89.5%
5	9	269	51 19.0%	106 39.4%	166 61.7%	219 81.4%	234 87.0%
6+	11	143	25 17.5%	47 32.9%	77 53.8%	99 69.2%	113 79.0%

Source: The Maryland Department of Human Resources, Client Automated Resource and Eligibility System (CARES).

**Table 6: Summary of Food Stamp Program Dependency, by Selected Variables, for a Cohort of New Entrants in August 1998**

Selected Variables	Median Months out of 32	Entering Cohort Size	Distribution of Total Number of Months out of 32				
			1 to 3	1 to 6	1 to 12	1 to 24	1 to 32
State	12	6,847	944 13.8%	1,987 29.0%	3,530 51.6%	5,162 75.4%	6,847 100.0%
Baltimore City	15	3,032	300 9.9%	692 22.8%	1,339 44.2%	2,128 70.2%	3,032 100.0%
Other Metro	10	2,669	482 18.1%	959 35.9%	1,589 59.5%	2,161 81.0%	2,669 100.0%
Non-Metro	12	1,146	162 14.1%	336 29.3%	602 52.5%	873 76.2%	1,146 100.0%
Female-Headed	13	4,852	553 11.4%	1,253 25.8%	2,321 47.8%	3,533 72.8%	4,852 100.0%
Male-Headed	10	1,990	391 19.6%	731 36.7%	1,204 60.5%	1,624 81.6%	1,990 100.0%
Black, Non-Hispanic	13	4,171	504 12.1%	1,133 27.2%	2,040 48.9%	3,084 73.9%	4,171 100.0%
White, Non-Hispanic	11	2,101	341 16.2%	656 31.2%	1,141 54.3%	1,601 76.2%	2,101 100.0%
Hispanic	12	127	21 16.5%	39 30.7%	65 51.2%	108 85.0%	127 100.0%
Other	10	448	78 17.4%	159 35.5%	284 63.4%	369 82.4%	448 100.0%
Household Size:							
1	12	3,125	528 16.9%	1,008 32.3%	1,723 55.1%	2,412 77.2%	3,125 100.0%
2	12	1,579	185 11.7%	424 26.9%	798 50.5%	1,192 75.5%	1,579 100.0%
3	13	1,080	127 11.8%	288 26.7%	529 49.0%	794 73.5%	1,080 100.0%
4	13	645	66 10.2%	181 28.1%	315 48.8%	488 75.7%	645 100.0%
5	15	269	23 8.6%	60 22.3%	113 42.0%	186 69.1%	269 100.0%
6+	18	143	14 9.8%	25 17.5%	49 34.3%	85 59.4%	143 100.0%

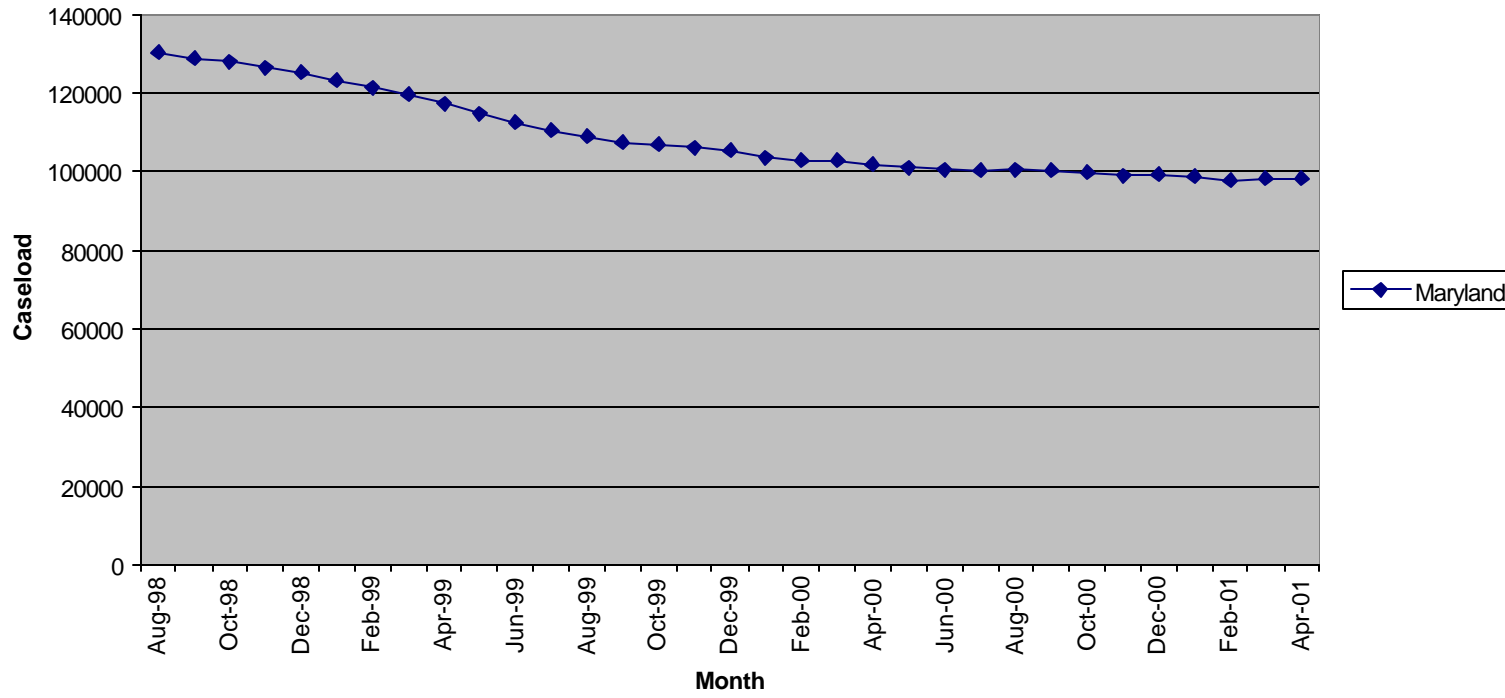
Source: The Maryland Department of Human Resources, Client Automated Resource and Eligibility System (CARES).

**Table 7: Percent Distribution of Participants in the Food Stamp Program, for a Cohort of New Entrants in August 1998, by Length of First Spell compared with Total Number of Months, August 1998 to March 2001**

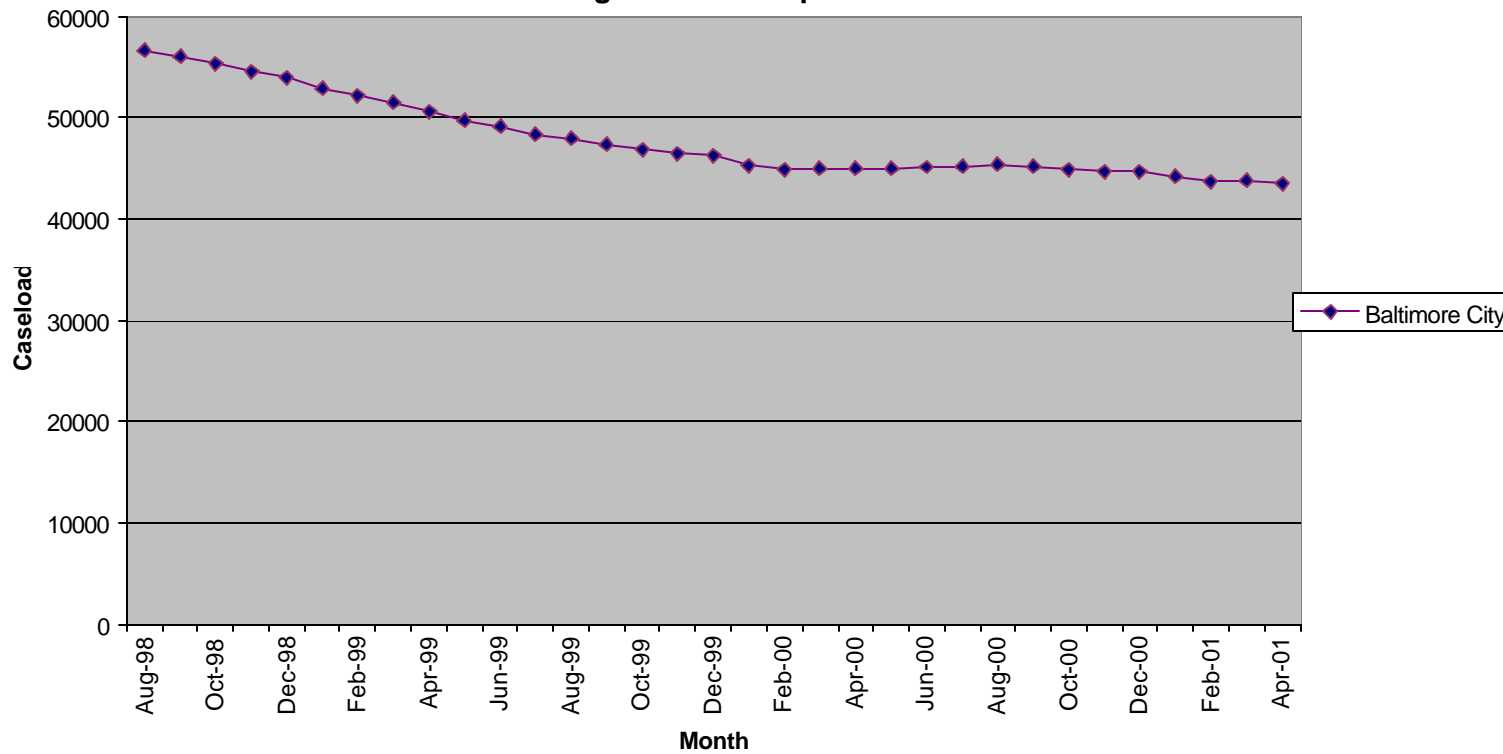
	Number of Participants	Number of Months			
		1 to 6	1 to 12	1 to 24	More than 24
1st spell	6,847	45%	69%	84%	16%
Total number of months	6,847	29%	52%	75%	25%

Source: The Maryland Department of Human Resources, Client Automated Resource and Eligibility System (CARES).

Figure 3(a). Maryland Food Stamp Caseload,  
August 1998 to April 2001



**Figure 3(b). Baltimore City Food Stamp Caseload,  
August 1998 to April 2001**



**Figure 3 (c). Prince George's County Food Stamp Caseload, August 1998 to April 2001**

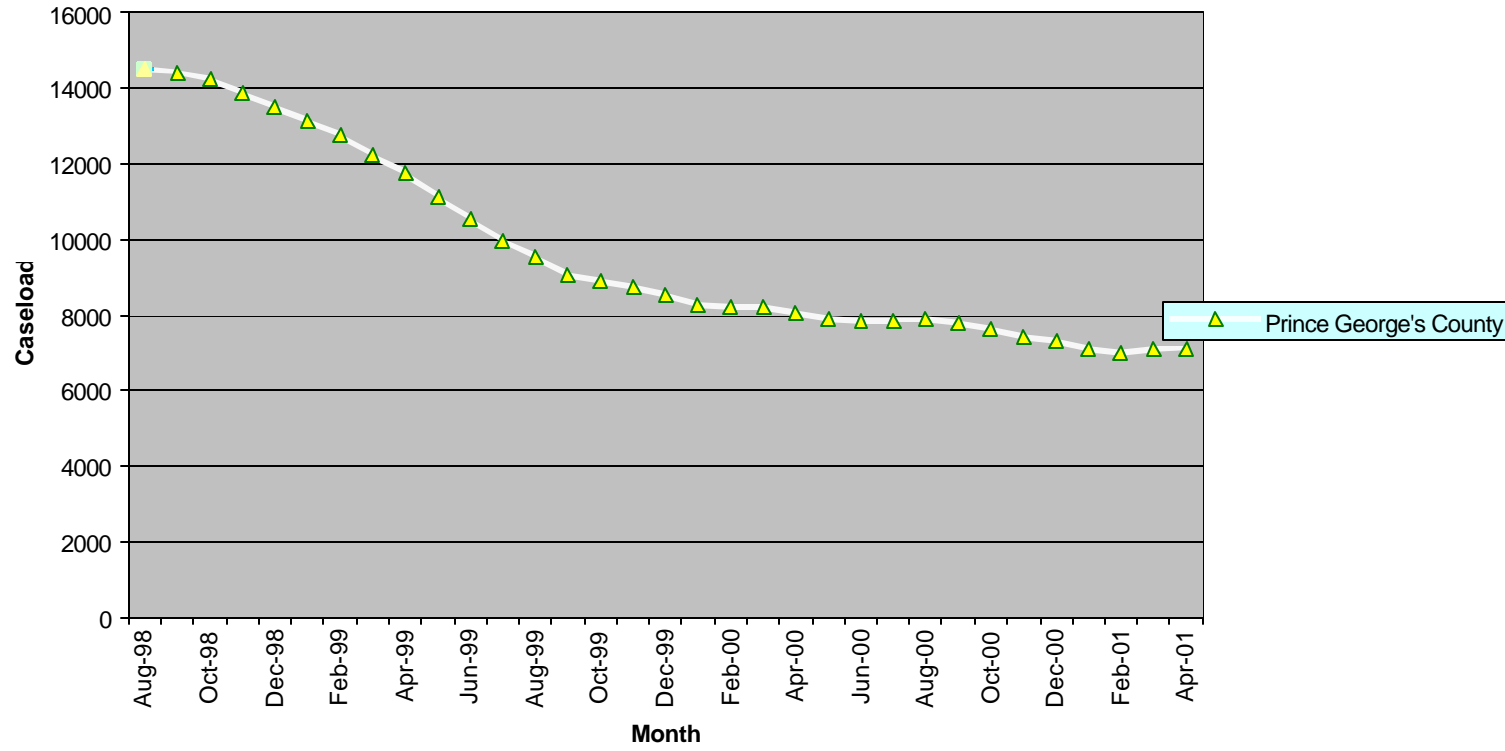


Figure 4(a). Maryland Statewide Entrants and Exitors by Month, August 1998 to March 2001

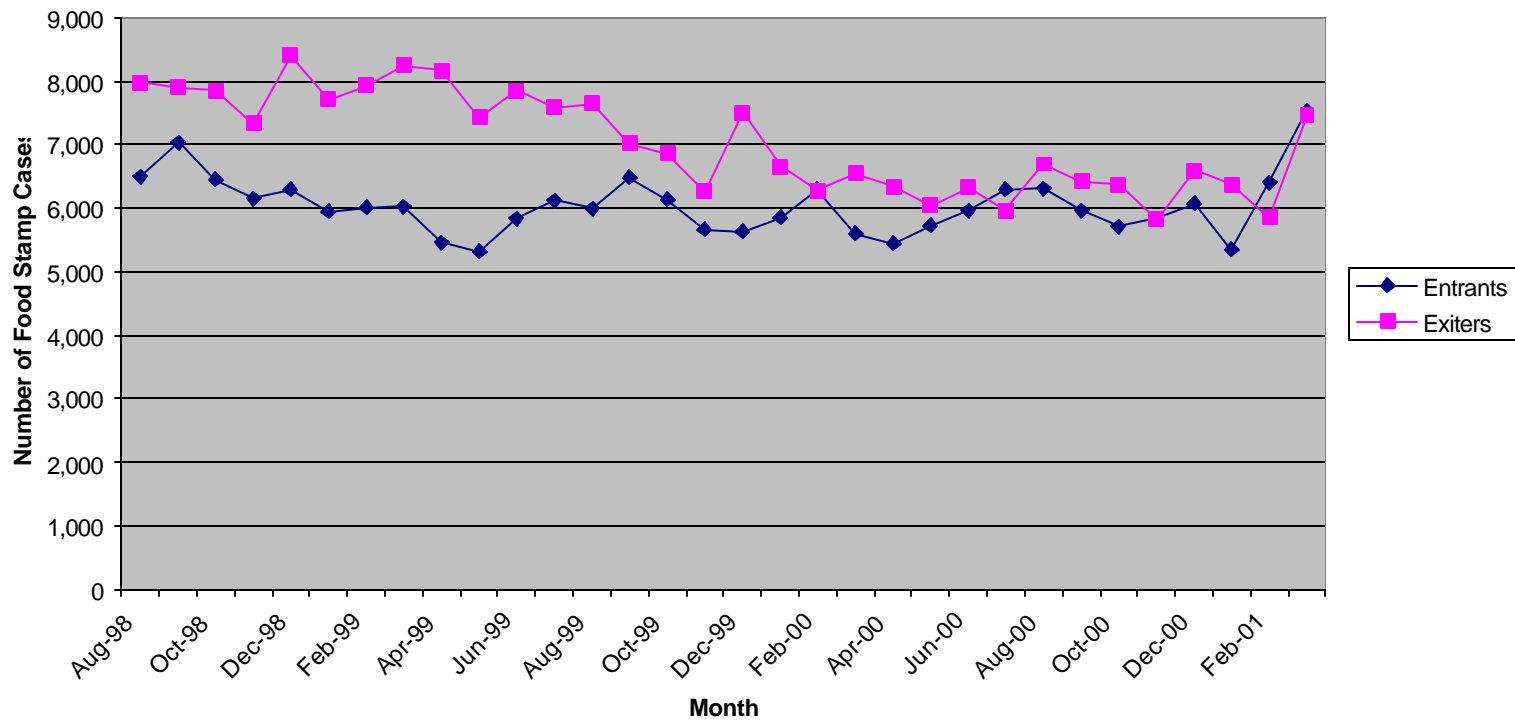




Figure 4(c). Prince George's County Entrants and Exitors by Month, August 1998 to March 2001

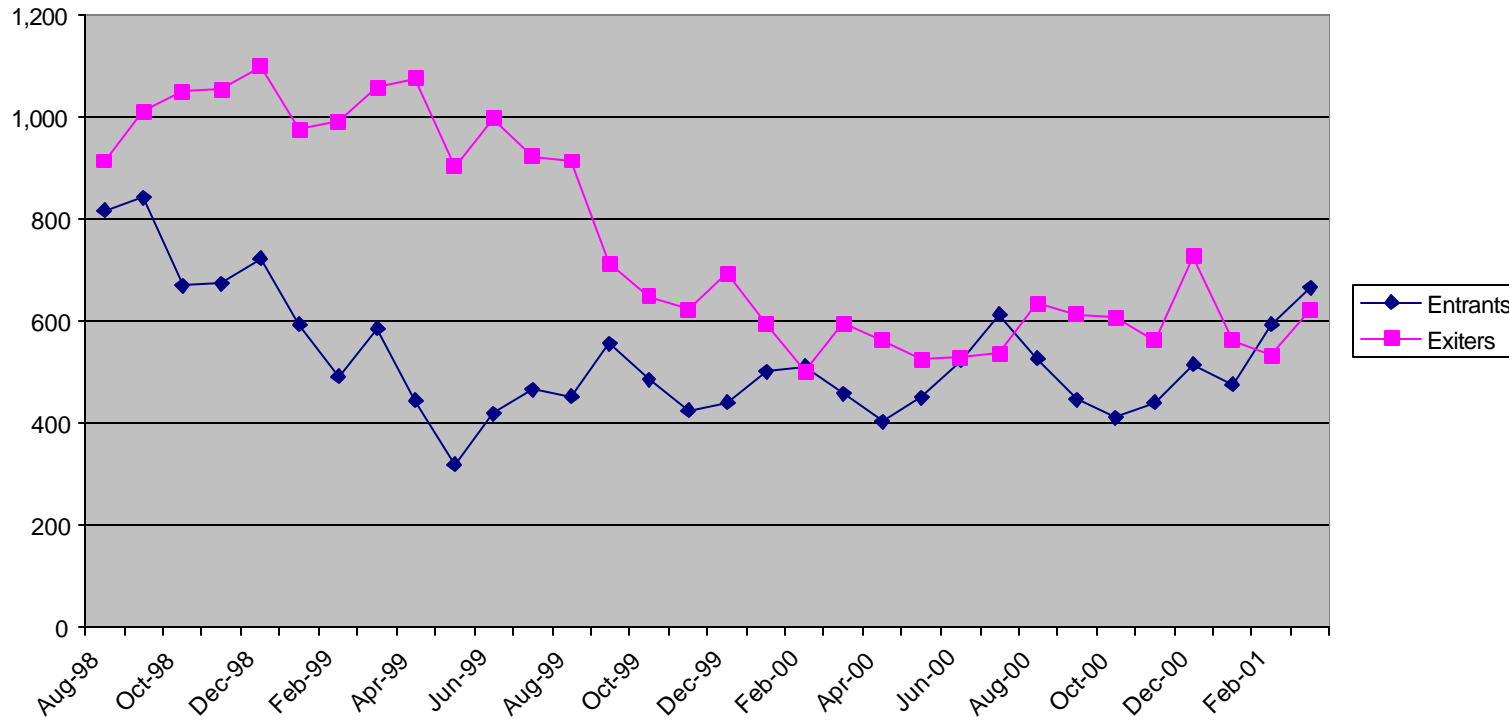


Figure 5a. Maryland Statewide Cumulative Exit Rate Profile,  
for Cohorts Entering in August 1998 and August 1999

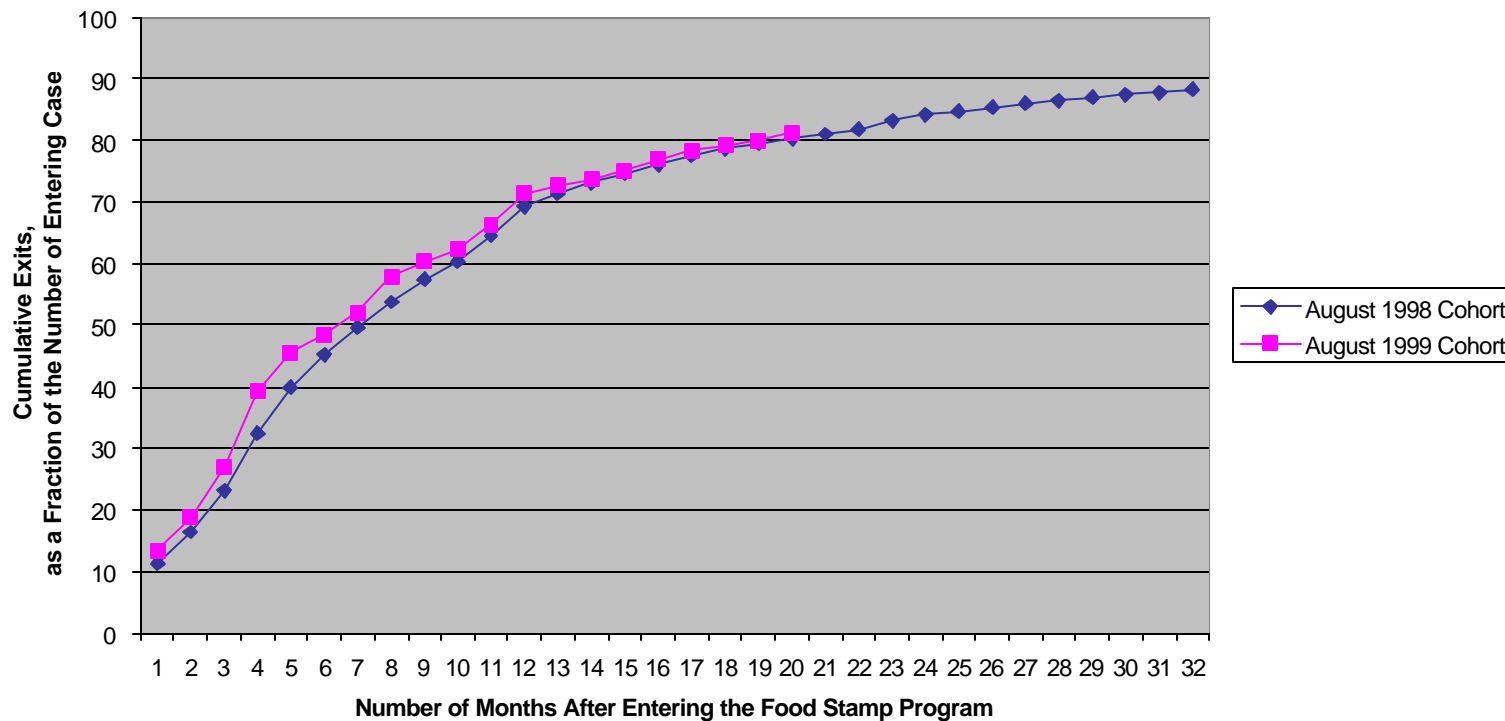


Figure 5b. Baltimore City Cumulative Exit Rate Profile, for Cohorts Entering in August 1998 and August 1999

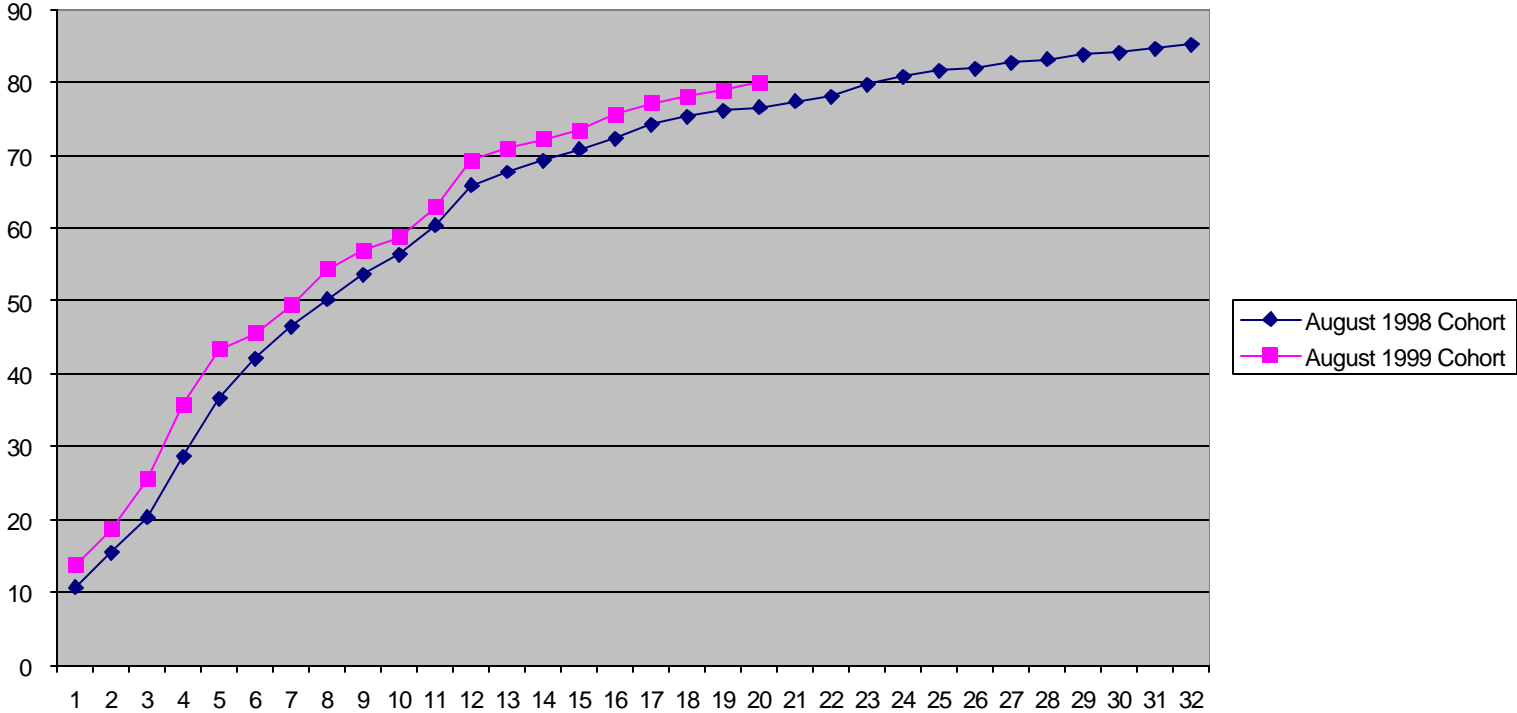


Figure 5c. Prince George's County Cumulative Exit Rate Profile, for Cohorts Entering in August 1998 and August 1999

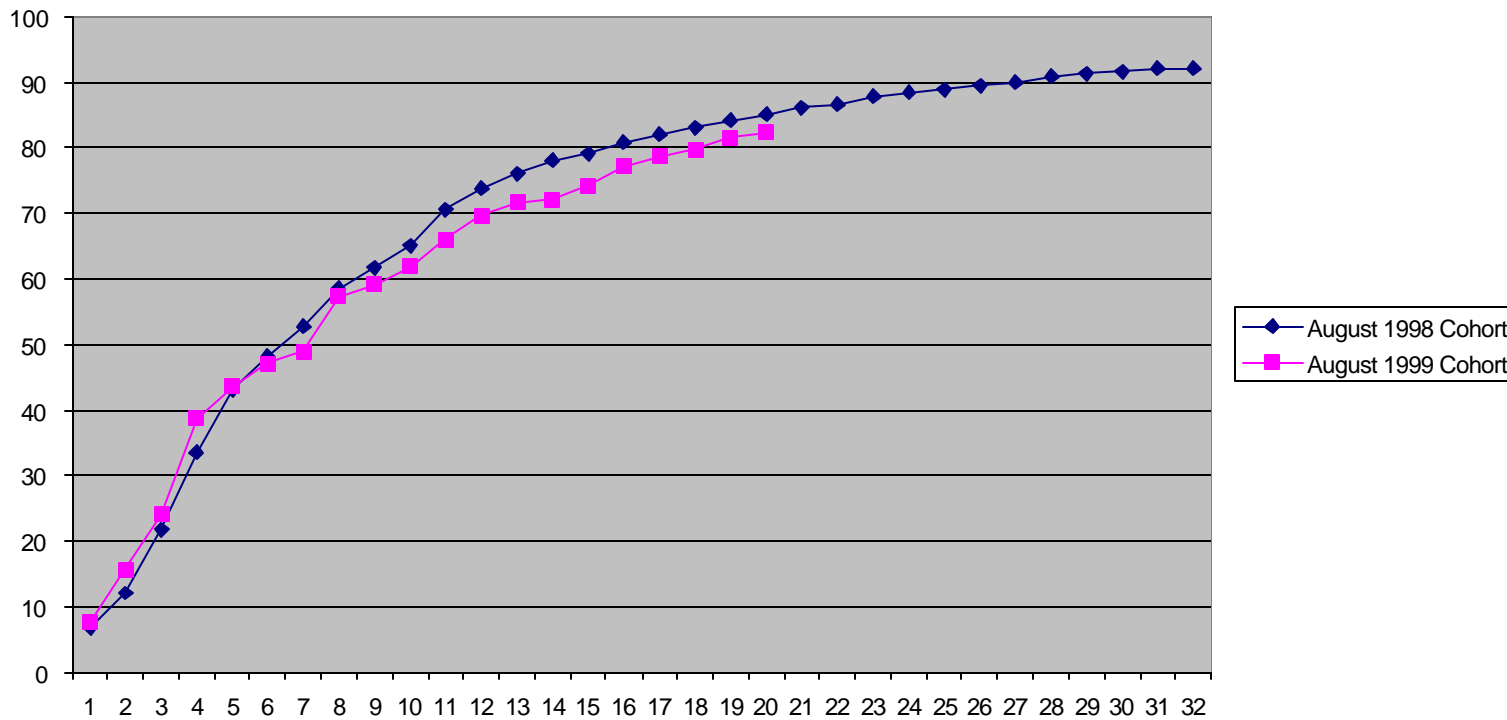


Figure 6 (a). Maryland Statewide Exit Rate by Month, for Cohorts Entering in August 1998 and August 1999

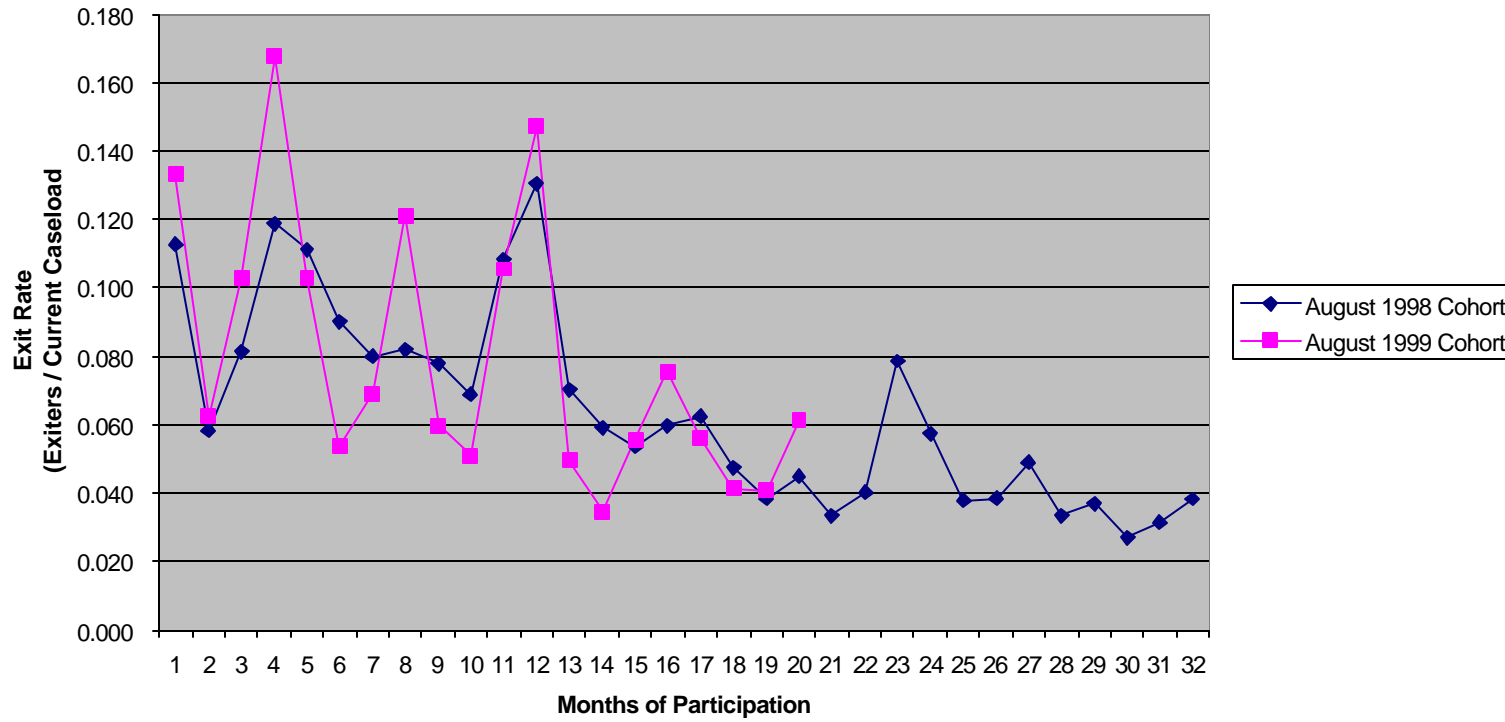


Figure 6(b). Baltimore City Exit Rate by Month, for Cohorts Entering in August 1998 and August 1999

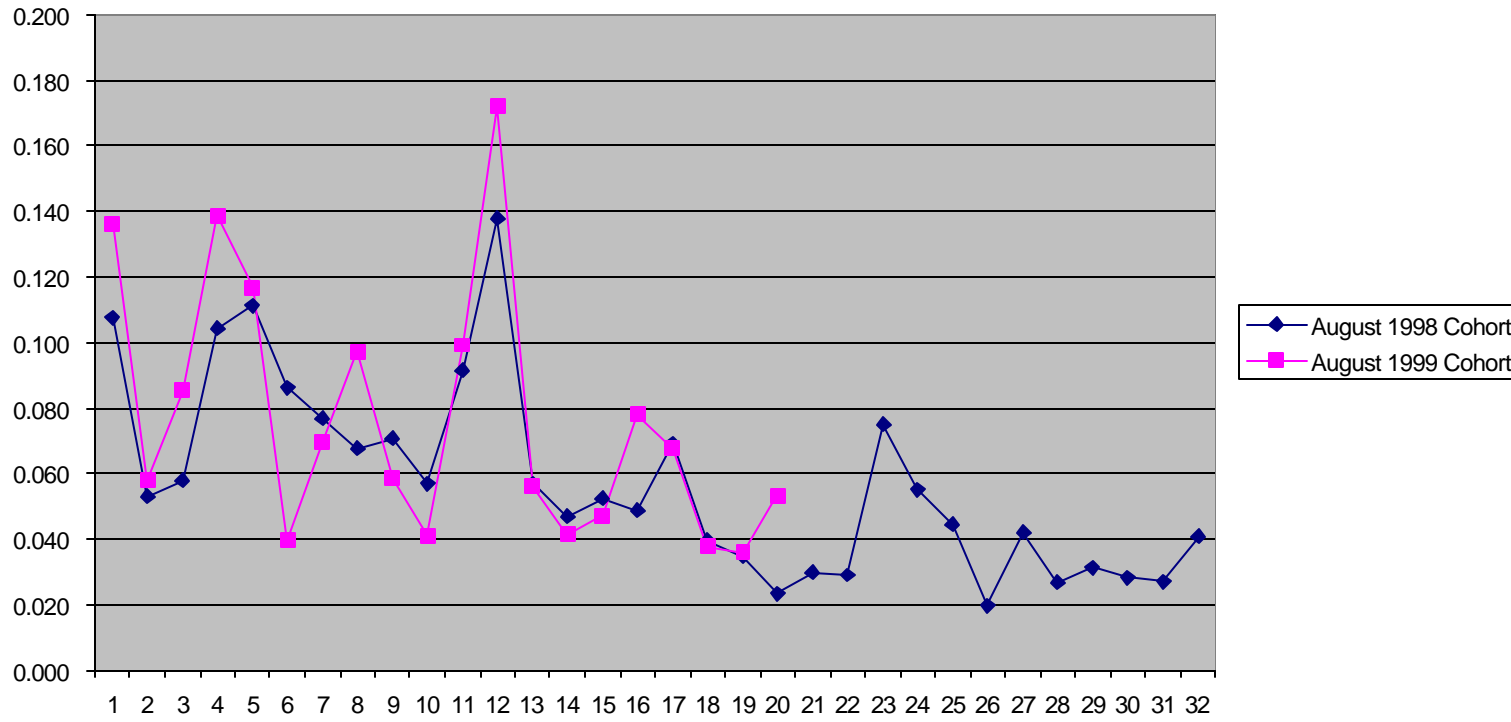


Figure 6(c). Prince George's County Exit Rate by Month,  
for Cohorts Entering in Aug. 1998 and Aug. 1999

